



LMSA+ presents:

# HOW TO: Undergraduate Research

Sophia Scandurro  
Co-President

# TABLE OF CONTENTS

**01**

Kinds of research

**02**

Finding research


**03**

Chancellor  
Research  
Fellowship



**Kinds of  
research**

**01**



# KINDS OF RESEARCH

01

## Documentary

Reviewing existing  
sources

02

## Field

Collecting  
information from the  
source

03

## Laboratory

Created conditions  
to mimic nature

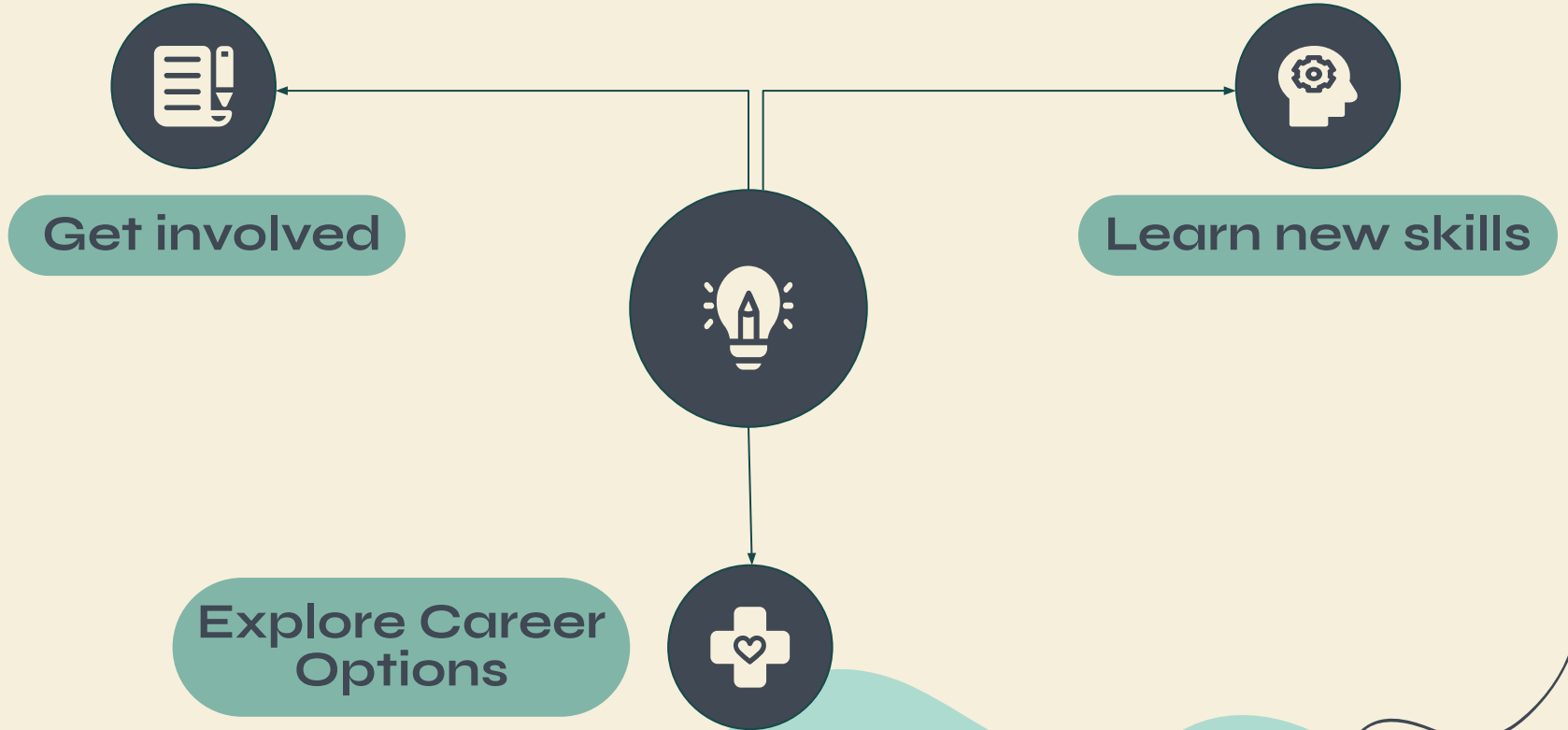


**02**

**Finding  
Research**



# Why is research important?



# Finding UCR research



Professors



Ug Research  
portal



Peers

# PROFESSOR TIPS

1. Go to office hours
2. Read some of their  
publications
3. Send emails
  - a. Follow up!



# Undergraduate Research Portal

## SEARCH BY

College/School  Faculty Mentor  Keyword

Search

Recommended Opportunities All Opportunities Interested Opportunities

Show 10 entries

Search:

	Project Title	Dept/Program	Faculty Mentor	Student Level	Type of Work	Application Deadline
1	settlements and polities (EmpCit) research working group	Sociology	chase-dunn, christopher	Sophomore Junior Senior	Data Collection Library or Archival Research Other Data Analysis	Open
2	Physiology, Behavior, and Morphology of Mice Born to Run	Evolution, Ecology and Organismal Biology	Garland, Theodore	Freshman Sophomore Junior Senior	Laboratory Data Collection Data Analysis	Open
3	History of science, technology and medicine	History	Simmons, Dana	Sophomore Junior Senior	Library or Archival Research	Open
4	Study of atmospheric chemical reaction mechanisms	Chemistry	Zhang, Jingsong	Sophomore Junior Senior	Laboratory	Open
5	How do we learn differently across	Psychology	Wu, Rachel	Freshman	Library or Archival Research	Open

# Research Programs



MARCU Star



CAMP



RISE



MacREU

# MARCU Star

## Pre-Trainee Program

---

- Summer program
- Underrepresented Freshmen/Sophomores
- Biomedical/Behavioral Science

## Trainee Program

---

- 2-year fellowship
- Underrepresented Juniors/Seniors
- Intent to pursue PhD in biomedical field

# California Alliance for Minority Participation (CAMP)

NSF-  
underrepresented  
students

STEM fields  
pursuing  
graduate  
degrees

Summer  
Scholars  
Program

# Research In Science Experience (RISE)

- 10-week summer program
- Sophomores/Juniors/Seniors
- Educationally and/or economically disadvantaged students
- Intent to pursue M.S. and PhD

# MacREU



Sophomores/Juniors/  
Seniors



Research on  
thin solid films



10 weeks

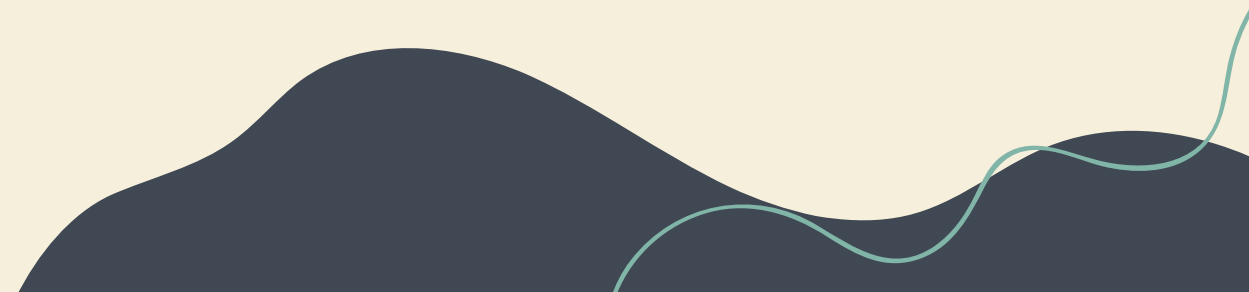


Legal resident



**Chancellor  
Research  
Fellowship**

**03**



# What is it?



“Designed to support faculty mentored research, scholarly and creative activities among UCR's undergraduate student population”



# What can you get?



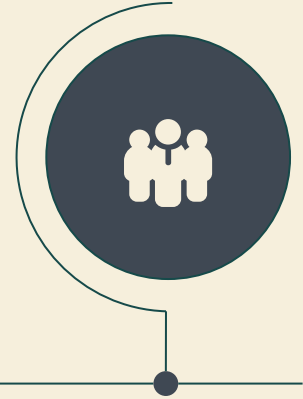
**Leadership  
Development**



**\$5,750  
stipend**



**Network  
with UCR  
officials**



**Mentorship**

# Requirements to apply

- Sophomore or junior standing
- Minimum GPA of 3.0
- **Must attend a CRF Application Workshop.**
- Faculty mentored research/scholarship/creative activity

# Materials to prepare



Proposal



Budget



Faculty mentor  
letter






Timeline



Elevator Pitch

# Application Breakdown

CRF Applications will be graded with a maximum score of 100 points. The breakdown is as follows:

- Abstract – 5 points
- Introduction – 10 points
- Description – 30 points
- Potential Implications – 10 points
- Implementation Timeline – 10 points
- Budget – 10 points
- References – 10 points
- Faculty Mentor Letter of Recommendation – 10 points
- Research Elevator Pitch - 5 points
  - [Video Upload Instructions](#) 
  - [CRF Elevator Pitch Examples](#) 
- [Tips and Guidelines](#) 



# Thank you!

Any questions?

